



QUAD
I N D U S T R I A L



2009 Product Catalogue

Premium Quality Loudspeakers and
Electronics for Fixed Installations

www.quadindustrial.com



Quad Industrial

Premium Quality Loudspeakers and electronics for fixed installations

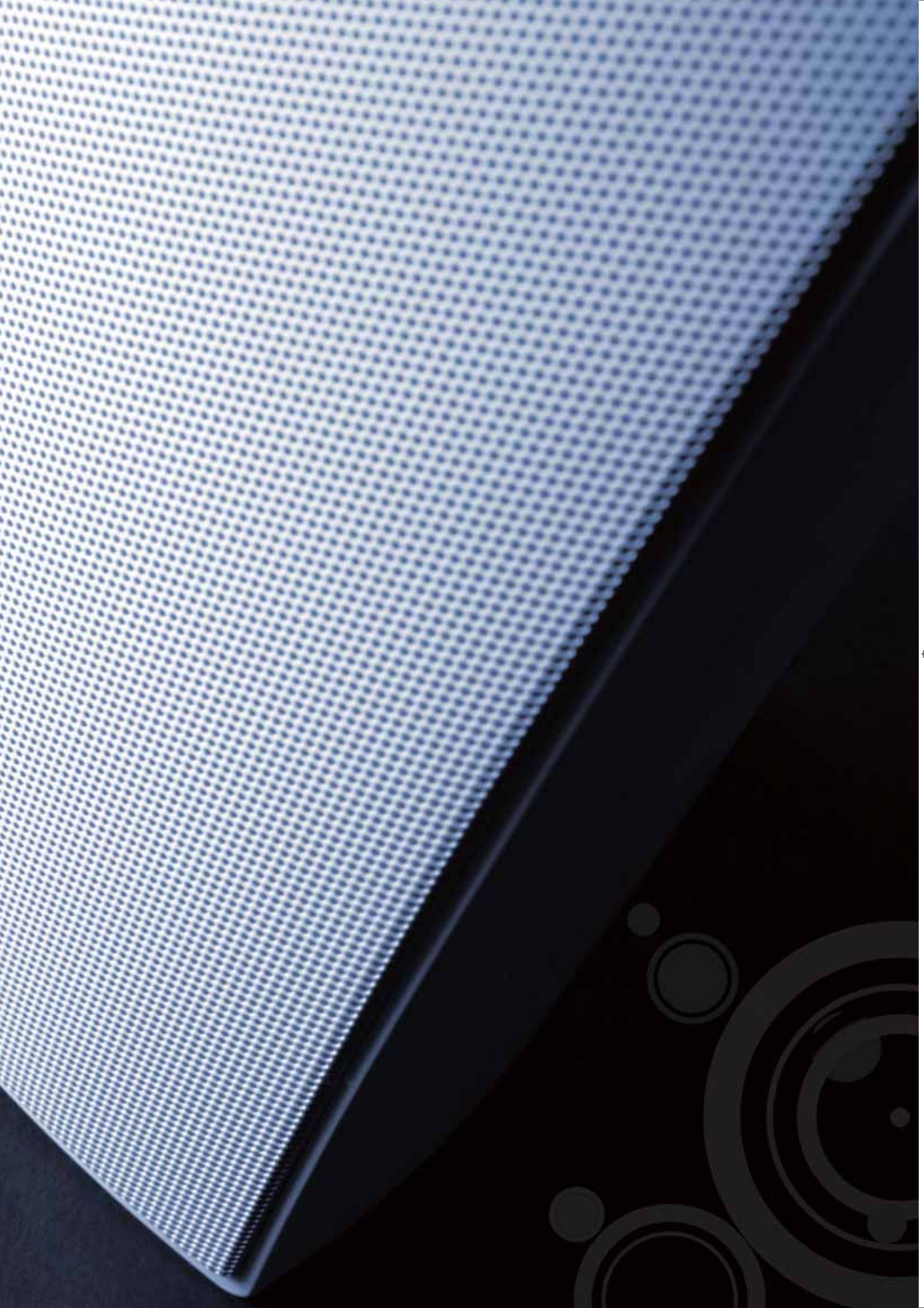
Few names in audio can claim the pioneering achievements of QUAD. From inauspicious beginnings in the English country side in 1940s, QUAD grew to prominence on the wings of innovation and a singular focus - sound reproduction so accurate and true that it represented the closest approach to the original. That focus became an obsession that has fascinated generations of purists even since its inception.

Since its acquisition by the International Audio Group (IAG), QUAD has thrived. By combining the QUAD philosophy with modern and highly efficient engineering, manufacturing and distribution, IAG has written a new and compelling chapter in the QUAD book; literally. A brand so revered that it spawned a truly impressive book chronicling it's history.

From this foundation comes the QUAD Industrial range of products. Professional audio products designed for use in a variety of fixed installations from background/foreground music right up to sound reinforcement and entertainment applications. Products that embrace the historical commitment to accuracy and precision while leveraging modern efficiency in manufacturing and distribution. The results are quite extraordinary.

QUAD Industrial is your best resource for premium quality loudspeakers and electronics for fixed installations in retail, hospitality, commercial, government, worship and other facilities that demand performance and exceptional value. IAG's manufacturing strength draws on over one million square feet (100,000 sq. meters) of factory space dedicated to the highest quality at the lowest possible cost. A small price to pay for the closest approach to the original sound.





Content

CONCOURSE C SERIES	1
CONCOURSE CE SERIES	4
CONCOURSE R SERIES	6
ARENA SERIES	8
CONCOURSE Q SERIES	12
FORUM SERIES	15
CONCOURSE D SERIES	18
QAA POWER AMPLIFIERS	20
QPM1 PRO ACTIVE MONITOR	22



CEILING SPEAKERS

CONCOURSE C SERIES

C4/C4-T/C4-16/C6/C6-T/C6-16/C8/C8-T/CSUB/CM4-T/CM4-4/CM4-8/CM4-16

Premium In-Ceiling Speakers - Concourse C Series

Concourse C series models are designed to deliver exceptional fidelity in a wide range of ceiling mounted speaker applications. Built on QUAD's legendary reputation for precision sound reproduction the C series combines high fidelity transducers designed specifically for the demands of installed sound with sophisticated crossover networks. The result is a range of ceiling speakers that deliver superior fidelity and reproduction of both speech and music.

Choose the Concourse C series for distributed speaker applications in retail, hospitality, restaurant, hotel and convention center installations.



Feature

- Complete, integrated ceiling mounted speaker systems
- Unique two-way designs utilizing genuine QUAD™ drivers
- Integral steel backboxes come fully assembled
- Multiple termination options with conduit capability
- Supplied with all mounting accessories for ceiling tile installation
- Integral 70/100V line transformers with multiple power taps
- All systems are CE rated



CONCOURSE C4/C4-16/C4-T/CM4-4/CM4-8/CM4-16/CM4-T

The QUAD Industrial CONCOURSE C4 is a two way round ceiling speaker with a 4" LF, 1" soft dome tweeter and passive crossover. The Concourse C4 is intended for small room applications requiring high quality speech reinforcement and/or background music.

CONCOURSE C6/C6-16/C6-T

The CONCOURSE C6 is a two way round ceiling speaker with a 6" LF, 1" soft dome tweeter and passive crossover. The Concourse C6 is intended for small to medium room applications requiring high quality speech reinforcement and/or background music.

CONCOURSE C8/C8-T

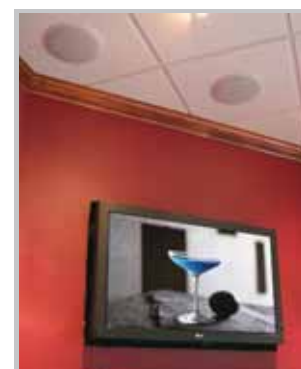
The CONCOURSE C8 is a two way round ceiling speaker with a 8" LF, 1" soft dome tweeter and passive crossover. The Concourse C8 is intended for medium to large room applications requiring high quality speech reinforcement and/or background music.

Concourse CSUB

The Concourse CSub is a round ceiling sub bass loudspeaker with a 10" long throw LF and passive low pass filter. The Concourse CSub is intended for medium to large room applications requiring high quality speech reinforcement and/or background music.

Applications

Corporate Meeting Rooms
Classrooms
Training Rooms
Restaurants
Retail Outlets
Health Clubs
Hotels





C4/C4-16/C4-T/
CM4-4/CM4-8/
CM4-16/CM4-T

	C4	C6	C8	CSUB
Power Handling:				
Continuous	25W	50W	75W	100W
Program	50W	100W	150W	200W
Peak	100W	200W	300W	400W
Transformer Taps (70v)	30W/15W/7.5W/3.7W	50W/30W/15W	75W/37.5W/18.8W/9.4W	-
Transformer Taps (100v)	30W/15W/7.5W	50W/30W	75W/37.5W/18.8W	-
Frequency Response(-10dB):	55Hz-20kHz	50Hz-20kHz	45Hz-20kHz	28Hz-500Hz
Frequency Response(+/-3dB):	70Hz-20kHz	70Hz-20kHz	55Hz-20kHz	43Hz-120Hz
Sensitivity (@1W/1M):	84dB	86dB	88dB	80dB
Max SPL:	104dB	109dB	113dB	106dB
Coverage (H x V):	110° x 90°	110° x 90°	110° x 90°	N/A
Directivity (DI) (H x V):	4.75	4.75	4.75	4.75
Impedance:	4 & 16 Ohms	4 & 16 Ohms	4 & 16 Ohms	4 & 16 Ohms
Regulatory approvals(9UL, CE, etc):	CE	CE	CE	CE
Transducers:				
LF Driver Size:	4" Cone	6" Cone	8" Cone	6" Cone
HF Driver Size:	1" Soft Dome Tweeter	1" Soft Dome Tweeter	1" Soft Dome Tweeter	1" Soft Dome Tweeter
Crossover Frequency:	2.2kHz	2.5kHz	2.3kHz	2.5kHz
Enclosure Material:	Plastic (ABS) metal can	Plastic (ABS) metal can	Plastic (ABS) metal can	Plastic (ABS) metal can
Connector Type:	Screw Terminal	Screw Terminal	Screw Terminal	Screw Terminal
Dimensions: (W x D)	9.92" x 8.62"	11.61" x 8.62"	13.11" x 9.37"	11.61" x 8.62"
	252 x 219mm	295 x 219mm	333x 238mm	295 x 219mm
Net Weight:	2.75kg/6.05lbs	4.1kg/9.02lbs	5.3kg/11.66lbs	4.1kg/9.02lbs

	CM4-4	CM4-8	CM4-16	CM4-T
Power Handling:				
Continuous	25W	25W	25W	70V:7.5W/15W/30W
Program	50W	50W	50W	100V:15W/30W
Peak	100W	100W	100W	-
Frequency Response(-10dB):	90Hz-20kHz	90Hz-20kHz	90Hz-20kHz	90Hz-20kHz
Frequency Response(+/-3dB):	105Hz-20kHz	105Hz-20kHz	105Hz-20kHz	105Hz-20kHz
Sensitivity (@1W/1M):	85dB	85dB	85dB	85dB
Max SPL:	105dB	105dB	105dB	100dB
Coverage (H x V):	110° x 90°	110° x 90°	110° x 90°	110° x 90°
Directivity (DI) (H x V):	4.75	4.75	4.75	4.75
Impedance:	4 Ohms	8 Ohms	16 Ohms	-
Regulatory approvals(9UL, CE, etc):	CE	CE	CE	CE
Transducers:				
LF Driver Size:	4" Cone	4" Cone	4" Cone	4" Cone
HF Driver Size:	1" Soft Dome	1" Soft Dome	1" Soft Dome	1" Soft Dome
Crossover Frequency:	2.5kHz	2.5kHz	2.5kHz	2.5kHz
Enclosure Material:	Plastic (ABS) metal can	Plastic (ABS) metal can	Plastic (ABS) metal can	Plastic (ABS) metal can
Connector Type:	Screw Terminal	Screw Terminal	Screw Terminal	Screw Terminal
Dimensions: (W x D)	9.92" x 4.33"	9.92" x 4.33"	9.92" x 4.33"	9.92" x 4.33"
	252 x 110mm	252 x 110mm	252 x 110mm	252 x 110mm
Net Weight:	1.55kg/3.41lbs	1.55kg/3.41lbs	1.55kg/3.41lbs	2.3kg/5.06lbs



C6/C6-16/
C6-T/C8/C8-T



CSUB

	C4-T	C4-16	C6-T	C6-16	C8-T
Power Handling:					
Continuous	-	25W	50W	50W	-
Program	-	50W	100W	100W	-
Peak	-	100W	200W	200W	-
Transformer Taps (70v)	30W/15W/7.5W/3.7W	-	-	-	75W/37.5W/18.8W/9.4W
Transformer Taps (100v)	30W/15W/7.5W	-	-	-	75W/37.5W/18.8W
Frequency Response(-10dB):	55Hz-20kHz	55Hz-20kHz	50Hz-20kHz	50Hz-20kHz	45Hz-20kHz
Frequency Response(+/-3dB):	70Hz-20kHz	70Hz-20kHz	70Hz-20kHz	70Hz-20kHz	55Hz-20kHz
Sensitivity (@1W/1M):	84dB	84dB	86dB	86dB	88dB
Max SPL:	104dB	104dB	109dB	109dB	113dB
Coverage (H x V):	110° x 90°	110° x 90°	110° x 90°	110° x 90°	110° x 90°
Directivity (DI) (H x V):	4.75	4.75	4.75	4.75	4.75
Impedance:	-	16 Ohms	-	16 Ohms	-
Regulatory approvals(9UL, CE, etc):	CE	CE	CE	CE	CE
Transducers:					
LF Driver Size:	4" Cone	4" Cone	6" Cone	6" Cone	8" Cone
HF Driver Size:	1" Soft Dome Tweeter	1" Soft Dome Tweeter	1" Soft Dome Tweeter	1" Soft Dome Tweeter	1" Soft Dome Tweeter
Crossover Frequency:	2.2kHz	2.2kHz	2.5kHz	2.5kHz	2.2kHz
Enclosure Material:	Plastic (ABS) metal can	Plastic (ABS) metal can	Plastic (ABS) metal can	Plastic (ABS) metal can	Plastic (ABS) metal can
Connector Type:	Screw Terminal	Screw Terminal	Screw Terminal	Screw Terminal	Screw Terminal
Dimensions: (W x D)	9.92" x 8.62"	9.92" x 8.62"	11.61" x 8.62"	11.61" x 8.62"	13.11" x 9.37"
	252 x 219mm	252 x 219mm	295 x 219mm	295 x 219mm	333x 238mm
Net Weight:	2.6kg/5.73lbs	2.2kg/4.84lbs	3.7kg/8.14lbs	2.5kg/5.5lbs	5.3kg/11.66lbs

CONCOURSE CE SERIES

CE-4/CE-4F/CE-6/CE-6F

In-Ceiling Speakers - Concourse CE Series

The Concourse CE series - designed for a variety of in-ceiling applications, are built around Quad Industrial's latest acoustic and manufacturing innovations. The model range consists of: Concourse CE-4, Concourse CE-4F, Concourse CE-6 and Concourse CE-6F. A high performance, durable yet affordable speaker, the Concourse CE series is the ideal choice for distributed speaker applications in installations. The Concourse CE series offers enough variety to satisfy nearly any requirement from paging to speech reinforcement and foreground/background music.

Feature

- All metal construction
- Excellent sound quality
- Fast and easy installation
- Wide dispersion
- Competitive pricing

Concourse CE-4

The CONCOURSE CE-4 has complete speaker assemblies, featuring sealed back boxes, integral mounting clips and perforated aluminum grilles. The CE-4 is metal construction to ensure maximum durability. The spring loaded mounting clips guarantee fast and simple installation.

Concourse CE-4F

The CONCOURSE CE-4F has complete speaker assemblies, featuring sealed back boxes, integral mounting clips and perforated aluminum grilles. The CE-4F is metal construction to ensure maximum durability. The spring loaded mounting clips guarantee fast and simple installation. The CE-4F includes a metal back box for extended bass response and added safety cable point.

Concourse CE-6

The CONCOURSE CE-6 has complete speaker assemblies, featuring sealed back boxes, integral mounting clips and perforated aluminum grilles. The CE-6 is metal construction to ensure maximum durability. The spring loaded mounting clips guarantee fast and simple installation.

Concourse CE-6F

The CONCOURSE CE-6F has complete speaker assemblies, featuring sealed back boxes, integral mounting clips and perforated aluminum grilles. The CE-6F is metal construction to ensure maximum durability. The spring loaded mounting clips guarantee fast and simple installation. The CE-6F includes a metal back box for extended bass response and added safety cable point.

Applications

Corporate Meeting Rooms
Classrooms
Training Rooms
Restaurants
Retail Outlets
Health Clubs
Hotels





CE-4

CE-4F



CE-6F

CE-6

	CE-4	CE-4F	CE-6	CE-6F
Power Handling:				
Continuous	70V:10W/5W/2.5W/1.25W	70V:10W/5W/2.5W/1.25W	70V:20W/10W/5W/2.5W	70V:20W/10W/5W/2.5W
Program	100V:10W/5W/2.5W	100V:10W/5W/2.5W	100V:20W/10W/5W	100V:20W/10W/5W
Peak				
Amplifier power Recomm	N/A	N/A	N/A	N/A
Frequency response (-10dB):	50-20KHz	50-20KHz	45-20KHz	45-20KHz
Frequency response (+/-3dB):	120-16KHz	120-16KHz	90-20KHz	90-20KHz
Sensitivity (@ 2.83volts):	86dB	86dB	89dB	89dB
Max SPL:	96dB	96dB	102dB	102dB
Impedance:	N/A	N/A	N/A	N/A
Regulatory approvals 9UL, CE, etc)	CE	CE	CE	CE
LF Driver: size	4"	4"	6.5"	6.5"
HF Driver: size	1" Mylar	1" Mylar	1" Cloth	1" Cloth
Crossover Frequency:	12kHz	12kHz	12kHz	12kHz
Connector type	screw terminal	screw terminal	screw terminal	screw terminal
Dimensions (HxWxD): mm	Φ158x69	Φ158x125	Φ205x84	Φ205x136
Net Weight:kg	0.8kg	1.3kg	1.4kg	2.0kg

CONCOURSE R SERIES

R6/R6-16/R8/R8-16

The QUAD Industrial CONCOURSE R6 is a two way rectangular wall/ ceiling speaker with a 6.5" LF, 1" soft dome tweeter and passive crossover. The Concourse R6 is intended for small to medium room applications requiring high quality speech reinforcement and/or background music.

The CONCOURSE R6 can be ordered as either 4 or 16 ohm low impedance, allowing efficient use of amplifier power and parallel looping connections with no transformer losses or signal degradation. The CONCOURSE R6 includes a pair of clamp mountings for weight distribution on ceiling finishes.

The QUAD Industrial CONCOURSE R8 is a three way rectangular wall/ ceiling speaker with a 8" LF, 2" soft dome tweeter, 1" soft dome tweeter and passive crossover. The Concourse R8 is intended for small to medium room applications requiring high quality speech reinforcement and/or background music.

The CONCOURSE R8 can be ordered as either 4 or 16 ohm low impedance, allowing efficient use of amplifier power and parallel looping connections with no transformer losses or signal degradation. The CONCOURSE R8 includes a pair of clamp mountings for weight distribution on ceiling finishes.



CONCOURSE R6/R6-16 Feature

- Two way rectangular wall/ceiling loudspeaker with 6.5" bass driver, 1" soft dome tweeter and passive crossover
- 100watts program, 200watts peak
- Optional 4ohm or 16ohm low impedance models
- Integral 30/15/7.5/3.75watt tap line transformer
- Integral mounts to allow simple installation from below the ceiling.

CONCOURSE R8/R8-16 Feature

- Two way rectangular wall/ceiling loudspeaker with 8" bass driver, 2" soft dome tweeter, 1" soft dome tweeter and passive crossover
- 200watts program, 400watts peak
- Optional 4ohm or 16ohm low impedance models
- Integral mounts to allow simple installation from below the ceiling.

Applications

Corporate Meeting Rooms
Classrooms
Training Rooms
Restaurants
Retail Outlets
Health Clubs
Hotels





R6, R6-16



R8, R8-16

	R6	R6-16	R8	R8-16
Power Handling:				
Continuous	50W	50W	100W	100W
Program	100W	100W	200W	200W
Peak	200W	200W	400W	400W
Frequency Response(-10dB):	40Hz-20kHz	40Hz-20kHz	35Hz-20kHz	35Hz-20kHz
Frequency Response(+/-3dB):	70Hz-16kHz	70Hz-16kHz	45Hz-20kHz	45Hz-20kHz
Sensitivity (@1W/1M):	89dB	89dB	90dB	90dB
Max SPL:	112dB	112dB	115dB	115dB
Coverage (H x V):	140° x 110°	140° x 110°	130° x 100°	130° x 100°
Directivity (DI) (H x V):	6.14	6.14	6.82	6.82
Impedance:	4 Ohms	16 Ohms	4 Ohms	16 Ohms
Regulatory approvals(9UL, CE, etc):	CE	CE	CE	CE
Transducers:				
LF Driver Size:	6.5"Cone	6.5"Cone	8"Cone	8"Cone
MID Driver: size	N/A	N/A	2"soft Dome MID Range	2"soft Dome MID Range
HF Driver Size:	1"soft Dome Tweeter	1"soft Dome Tweeter	1"soft Dome Tweeter	1"soft Dome Tweeter
Crossover Frequency:	2.3kHz	2.3kHz	1.2kHz&5.2kHz	1.2kHz&5.2kHz
Enclosure Material:	Plastic(ABS)	Plastic(ABS)	Plastic(ABS)	Plastic(ABS)
Connector Type:	Spring-loaded Terminal	Spring-loaded Terminal	Spring-loaded Terminal	Spring-loaded Terminal
Dimensions: (W x D)	332x232x92mm	332x232x92mm	444x284x110mm	444x284x110mm
	13.07"x9.14"x3.62"	13.07"x9.14"x3.62"	17.48"x11.18"x4.33"	17.48"x11.18"x4.33"
Net Weight:	1.8kg/3.96lbs	1.8kg/3.96lbs	4.8kg/10.56lbs	4.8kg/10.56lbs

ARENA SERIES

ARENA 6/6-16/6-T/ARENA 8/8-16/8-T/ARENA 10/10-16/10-T/
ARENA 12/12-16/12-T/ARENA 15/15-16/15-T

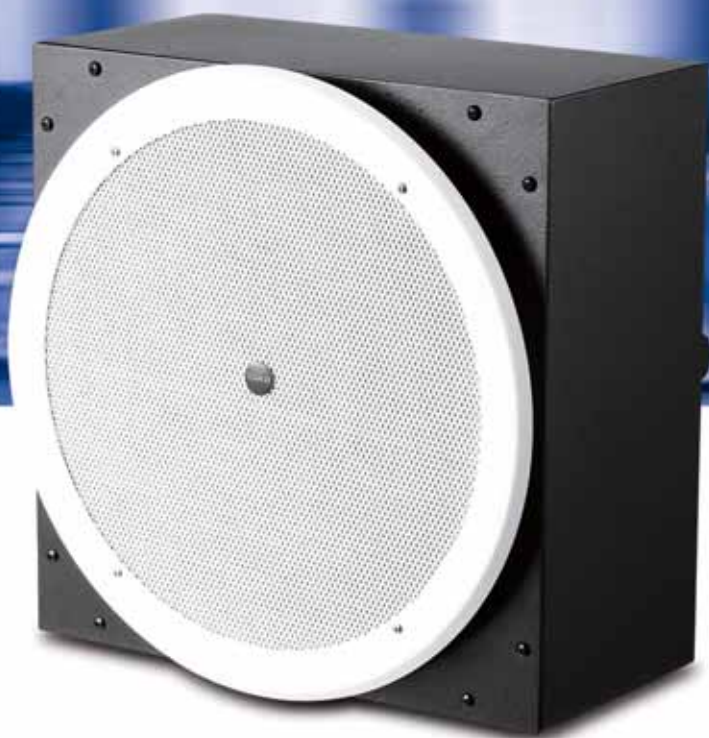
Large Format Ceiling Loudspeakers--Arena Series

For the most demanding ceiling speaker applications there is the Arena series. A complete loudspeaker system consisting of high performance drivers in ported steel enclosures, the Arena series are ready to be installed in any high-ceiling, large venue application. Designed to deliver high sound pressure levels with point-source precision, Arena is the right choice for Hotel Ballrooms, Meeting Rooms, Convention Centers, Sports Facilities and Transportation Hubs.

Arena models are fitted with QUAD's unique DuAlign™ drive units which deliver unprecedented linearity and accuracy. Combining a cast-frame woofer with a rear mounted compression driver, DuAlign™ drive units maintain the integrity of the electrical signal and therefore reproduce all of the harmonic content of the original sound. For the ultimate in precision and performance choose Arena.

Feature

- Complete ceiling mounted ported loudspeaker systems
- Heavy-gauge damped steel enclosures complete with baffles
- Unique DuAlign™ coaxial drive units in 6"/8"/10"/12" and 15" sizes
- Heavy duty cast frame woofer assemblies
- True compression driver with Titanium diaphragm mounted coaxially
- Optional 250W 70/100V transformer with taps at 250/125/60/30W
- Driver and grille are tethered for seismic restraint conformance
- All systems are CE rated



Applications

Corporate Meeting Rooms
Classrooms
Training Rooms
Restaurants
Retail Outlets
Health Clubs
Hotels

Arena 6/Arena 6-16/Arena 6T

The QUAD Industrial ARENA 6 is a high performance two way 'point source' ceiling loudspeaker featuring a 6" LF driver and coaxially mounted 2" compression driver with a passive crossover. The ARENA 6 is intended for medium to large sized applications requiring high quality speech reinforcement, AV presentation and/or music applications.

Arena 8/Arena 8-16/Arena 8T

The QUAD Industrial ARENA 8 is a high performance two way 'point source' ceiling loudspeaker featuring a 8" LF driver and coaxially mounted 2" compression driver with a passive crossover. The ARENA 8 is intended for medium to large sized applications requiring high quality speech reinforcement, AV presentation and/or music applications.





ARENA 6/ARENA 6-16/ARENA 6-T
ARENA 8/ARENA 8-16/ARENA 8-T

	ARENA 6	ARENA 6-16	ARENA 6T
Power Handling:			
Continuous	80W	80W	70V:10W/20W/40W/80W
Program	160W	160W	100V:20W/40W/80W
Peak	320W	320W	
Frequency Response(-10dB):	80Hz-20kHz	80Hz-20kHz	80Hz-20kHz
Frequency Response(+/-3dB):	100Hz-16kHz	100Hz-16kHz	100Hz-14kHz
Sensitivity (@1W/1M):	88dB	88dB	87dB
Max SPL:	113dB	113dB	106dB
Coverage (H x V):	130°Conical	130°Conical	130°Conical
Directivity (DI) (H x V):	4.53	4.53	4.53
Impedance:	4 Ohms nominal	16 Ohms nominal	N/A
Regulatory approvals(9UL, CE, etc):	CE	CE	CE
Transducers:			
LF Driver Size:	6"Coaxial	6"Coaxial	6"Coaxial
HF Driver Size:	2"Compression Driver	2"Compression Driver	2"Compression Driver
Crossover Frequency:	2.5kHz	2.5kHz	2.5kHz
Enclosure Material:	Rustproof Steel	Rustproof Steel	Rustproof Steel
Connector Type:	Barrier Strip	Barrier Strip	Barrier Strip
Dimensions: (H x W x D)	306x306x191.5mm	306x306x191.5mm	306x306x191.5mm
	12.05"x12.05"x7.5"	12.05"x12.05"x7.5"	12"x12"x7.5"
Net Weight:	9.5kg/20.9lbs	9.5kg/20.9lbs	13.5kg/29.7lbs

	ARENA 8	ARENA 8-16	ARENA 8T
Power Handling:			
Continuous	120W	120W	70V:15W/30W/60W/120W
Program	250W	250W	100V:30W/60W/120W
Peak	500W	500W	
Frequency Response(-10dB):	55Hz-20kHz	55Hz-20kHz	55Hz-20kHz
Frequency Response(+/-3dB):	80Hz-20kHz	80Hz-20kHz	80Hz-16kHz
Sensitivity (@1W/1M):	90dB	90dB	89dB
Max SPL:	117dB	117dB	110dB
Coverage (H x V):	105°Conical	105°Conical	105°Conical
Directivity (DI) (H x V):	7.39	7.39	7.39
Impedance:	4 ohms nominal	16 ohms nominal	N/A
Regulatory approvals(9UL, CE, etc):	CE	CE	CE
Transducers:			
LF Driver Size:	8"Coaxial	8"Coaxial	8"Coaxial
HF Driver Size:	2"Compression Driver	2"Compression Driver	2"Compression Driver
Crossover Frequency:	2.2kHz	2.2kHz	2.2kHz
Enclosure Material:	Rustproof Steel	Rustproof Steel	Rustproof Steel
Connector Type:	Barrier Strip	Barrier Strip	Barrier Strip
Dimensions: (H x W x D)	375x375x219.5mm	375x375x219.5mm	375x375x219.5mm
	14.7"x14.7"x8.6"	14.7"x14.7"x8.6"	14.7"x14.7"x8.6"
Net Weight:	13.1kg/28.8lbs	13.1kg/28.8lbs	17.5kg/38.5lbs

Arena 10/Arena 10-16/Arena 10T

The QUAD Industrial ARENA 10 is a high performance two way 'point source' ceiling loudspeaker featuring a 10" LF driver and coaxially mounted 2" compression driver with a passive crossover. The ARENA 10 is intended for medium to large sized applications requiring high quality speech reinforcement, AV presentation and/or music applications

Arena 12/Arena 12-16/Arena 12T

The QUAD Industrial ARENA 12 is a high performance two way 'point source' ceiling loudspeaker featuring a 12" LF driver and coaxially mounted 2" compression driver with a passive crossover. The ARENA 12 is intended for medium to large sized applications requiring high quality speech reinforcement, AV presentation and/or music applications.

Arena 15/Arena 15-16/Arena 15T

The QUAD Industrial ARENA 15 is a high performance two way 'point source' ceiling loudspeaker featuring a 15" LF driver and coaxially mounted 2" compression driver with a passive crossover. The ARENA 15 is intended for medium to large sized applications requiring high quality speech reinforcement, AV presentation and/or music applications.



ARENA 10/ARENA 10-16/ARENA 10-T
ARENA 12/ARENA 12-16/ARENA 12-T
ARENA 15/ARENA 15-16/ARENA 15-T

	ARENA 10	ARENA 10-16	ARENA 10T
Power Handling:			
Continuous	150W	150W	70V:15W/30W/60W/120W
Program	300W	300W	100V:30W/60W/120W
Peak	600W	600W	
Frequency Response(-10dB):	50Hz-20kHz	50Hz-20kHz	50Hz-20kHz
Frequency Response(+/-3dB):	60Hz-20kHz	60Hz-20kHz	60Hz-16kHz
Sensitivity (@1W/1M):	94dB	94dB	93dB
Max SPL:	122dB	122dB	114dB
Coverage (H x V):	75°Conical	75°Conical	75°Conical
Directivity (DI) (H x V):	7.46	7.46	7.46
Impedance:	4 ohms nominal	16 ohms nominal	N/A
Regulatory approvals(9UL, CE, etc):	CE	CE	CE
Transducers:			
LF Driver Size:	10"Coaxial	10"Coaxial	10"Coaxial
HF Driver Size:	2"Compression Driver	2"Compression Driver	2"Compression Driver
Crossover Frequency:	2.1kHz	2.1kHz	2.1kHz
Enclosure Material:	Rustproof Steel	Rustproof Steel	Rustproof Steel
Connector Type:	Barrier Strip	Barrier Strip	Barrier Strip
Dimensions: (H x W x D)	500x500x295.5mm 19.7"x19.7"x11.6"	500x500x295.5mm 19.7"x19.7"x11.6"	500x500x295.5mm 19.7"x19.7"x11.6"
Net Weight:	24.5kg/53.9lbs	24.5kg/53.9lbs	28.5kg/62.7lbs



ARENA 10/ARENA 10-16/ARENA 10-T
ARENA 12/ARENA 12-16/ARENA 12-T
ARENA 15/ARENA 15-16/ARENA 15-T

	ARENA 12	ARENA 12-16	ARENA 12T
Power Handling:			
Continuous	200W	200W	70V:25W/50W/100W/200W
Program	400W	400W	100V:50W/100W/200W
Peak	800W	800W	
Frequency Response(-10dB):	50Hz-20kHz	50Hz-20kHz	50Hz-20kHz
Frequency Response(+/-3dB):	55Hz-20kHz	55Hz-20kHz	55Hz-16kHz
Sensitivity (@1W/1M):	96dB	96dB	95dB
Max SPL:	125dB	125dB	118dB
Coverage (H x V):	85°Conical	85°Conical	85°Conical
Directivity (DI) (H x V):	6.92	6.92	6.92
Impedance:	4 ohms nominal	16 ohms nominal	N/A
Regulatory approvals(9UL, CE, etc):	CE	CE	CE
Transducers:			
LF Driver Size:	12"Coaxial	12"Coaxial	12"Coaxial
HF Driver Size:	2"Compression Driver	2"Compression Driver	2"Compression Driver
Crossover Frequency:	2kHz	2kHz	2kHz
Enclosure Material:	Rustproof Steel	Rustproof Steel	Rustproof Steel
Connector Type:	Barrier Strip	Barrier Strip	Barrier Strip
Dimensions: (H x W x D)	500x500x345mm 19.7"x19.7"x13.6"	500x500x345mm 19.7"x19.7"x13.6"	500x500x345mm 19.7"x19.7"x13.6"
Net Weight:	25.2kg/55.4lbs	25.2kg/55.4lbs	29.5kg/64.9lbs

	ARENA 15	ARENA 15-16	ARENA 15T
Power Handling:			
Continuous	300W	300W	70V:30W/60W/120W/240W
Program	600W	600W	100V:60W/120W/240W
Peak	1200W	1200W	
Frequency Response(-10dB):	45Hz-20kHz	45Hz-20kHz	45Hz-20kHz
Frequency Response(+/-3dB):	50Hz-20kHz	50Hz-20kHz	50Hz-15kHz
Sensitivity (@1W/1M):	98dB	98dB	97dB
Max SPL:	129dB	129dB	121dB
Coverage (H x V):	100°Conical	100°Conical	100°Conical
Directivity (DI) (H x V):	7.28	7.28	7.28
Impedance:	4 ohms nominal	16 ohms nominal	N/A
Regulatory approvals(9UL, CE, etc):	CE	CE	CE
Transducers:			
LF Driver Size:	15"Coaxial	15"Coaxial	15"Coaxial
HF Driver Size:	2"Compression Driver	2"Compression Driver	2"Compression Driver
Crossover Frequency:	2kHz	2kHz	2kHz
Enclosure Material:	Rustproof Steel	Rustproof Steel	Rustproof Steel
Connector Type:	Barrier Strip	Barrier Strip	Barrier Strip
Dimensions: (H x W x D)	500x500x425.5mm 19.7"x19.7"x16.7"	500x500x425.5mm 19.7"x19.7"x16.7"	500x500x425.5mm 19.7"x19.7"x16.7"
Net Weight:	29.5kg/64.9lbs	29.5kg/64.9lbs	33.5kg/73.7lbs

CONCOURSE Q SERIES

Q4/Q4T/Q5/Q5T/Q6/Q6T/Q8/Q8T/Q6A/Q8A/Q SUB/Q SUBA

For distributed speaker applications that call for surface mounted enclosures choose from the many options available from the Concourse Q series. A variety of models each designed to deliver high precision, exceptional fidelity and aesthetics that allow them to blend into any interior environment. Comprising both passive and powered models, including a unique corner-mount subwoofer, the Q series are the right choice for applications as varied as foreground music, distributed speech reinforcement, surround AV and even nearfield monitoring.

For traditional surface mount applications choose from the Q4, Q5, Q6 or Q8. Each model delivers superior response and articulation by using genuine QUAD™ transducers and sophisticated crossover networks. All models are available in low impedance or 70/100V versions, while the Q6 and Q8 are also available as self-powered models for AV and monitoring applications.

Feature

- High performance two-way surface mount speaker systems
- Four full-range models in Q series; Q4, Q5, Q6 and Q8
- Q6 and Q8 also available in self-powered versions
- Available in low impedance or 70/100V versions
- Optional 250/125/60/30watt transformer
- Concourse Q-Sub available in self-powered version



Q4/Q4T

The QUAD Industrial CONCOURSE Q4 is a two way passive enclosure with a 4" bass driver and dome tweeter. The CONCOURSE Q4 is intended for small room applications requiring high quality speech reinforcement and/or background music. The CONCOURSE Q4 is available in two color options (Black and White), each with matching grill cloth to hide the transducers and ensure a uniform enclosure color.

Q5/Q5T

The QUAD Industrial CONCOURSE Q5 is a two way passive enclosure with a 5" bass driver and 1" dome tweeter. The CONCOURSE Q5 is intended for small room applications requiring high quality speech reinforcement and/or background music. The CONCOURSE Q5 is available in two color options (Black and White), each with matching grill cloth to hide the transducers and ensure a uniform enclosure color.

Q6/Q6T

The Concourse Q6 is a two-way speaker system consisting of a 6.5" low frequency driver and a 1" dome tweeter and is supplied with a wall mounting bracket. There are two versions available: Concourse Q6 80ohms 50 Watts; Concourse Q6T 50 Watt 70/100 Volt transformer included. There are two color options (Black & White).

Q8/Q8T

The Concourse Q8 is a two-way speaker system consisting of an 8" low frequency driver and a 1" dome tweeter and is supplied with a wall mounting bracket. There are four versions available: Concourse Q8 80ohms, 50 Watts; Concourse Q8T 50 Watt 70/100 Volt transformer included. There are two color options (Black & White).

Applications

Corporate Meeting Rooms
Classrooms
Training Rooms
Restaurants
Retail Outlets
Health Clubs
Hotels





Q4/Q4T/Q5/Q5T/Q6/Q6T/Q8/Q8T

	Q4	Q4T	Q5	Q5T
Power Handling:				
Continuous	25W	70V:6.8W/12.5W/25W	35W	70V:8.8W/17.5W/35W
Program	50W	100V:12.5W/25W	70W	100V:17.5W/35W
Peak	100W		140W	
Frequency Response(-10dB):	60Hz-20kHz	60Hz-20kHz	50Hz-20kHz	50Hz-20kHz
Frequency Response(+/-3dB):	100Hz-20kHz	100Hz-16kHz	60Hz-20kHz	60Hz-16kHz
Sensitivity (@1W/1M):	84dB	83dB	85dB	84dB
Max SPL:	105dB	95dB	106dB	98dB
Coverage (H x V):	110° x 130°	110° x 130°	150° x 150°	150° x 150°
Directivity (DI) (H x V):	6.62	6.62	5.36	5.36
Impedance:	8 ohms	N/A	8 ohms	N/A
Regulatory approvals(9UL, CE, etc):	CE	CE	CE	CE
Transducers:				
LF Driver Size:	4"Cone	4"Cone	5"Cone	5"Cone
MID Driver: size	N/A	N/A	N/A	N/A
HF Driver Size:	1"soft Dome Tweeter	1"soft Dome Tweeter	1"soft Dome Tweeter	1"soft Dome Tweeter
Crossover Frequency:	2.8kHz	2.8kHz	2.5kHz	2.5kHz
Enclosure Material:	Plastic(ABS)	Plastic(ABS)	Plastic(ABS)	Plastic(ABS)
Connector Type:	Screw Terminal	Screw Terminal	Screw Terminal	Screw Terminal
Dimensions: (W x D)	9.1"x6.3"x5.8"	9.1"x6.3"x5.8"	7.3"x7.3"x11"	7.3"x7.3"x11"
	232x160x148mm	232x160x148mm	185x185x280mm	185x185x280mm
Net Weight:	4.6lbs/2.1kg	5.28lbs/2.4kg	5.5lbs/2.5kg	6.6lbs/3.0kg
	Q6	Q6T	Q8	Q8T
Power Handling:				
Continuous	50W	70V:12.5W/25W/50W	50W	70V:12.5W/25W/50W
Program	100W	100V:25W/50W	100W	100V:25W/50W
Peak	200W		200W	
Frequency Response(-10dB):	50Hz-20kHz	50Hz-20kHz	50Hz-20kHz	50Hz-20kHz
Frequency Response(+/-3dB):	70Hz-20kHz	70Hz-20kHz	70Hz-20kHz	70Hz-20kHz
Sensitivity (@1W/1M):	86dB	85dB	87dB	86dB
Max SPL:	109dB	102dB	110dB	103dB
Coverage (H x V):	150° x 170°	150° x 170°	130° x 180°	130° x 180°
Directivity (DI) (H x V):	6.3	6.3	6.59	6.59
Impedance:	8 ohms	N/A	8 ohms	N/A
Regulatory approvals(9UL, CE, etc):	CE	CE	CE	CE
Transducers:				
LF Driver Size:	6.5"Cone	6.5"Cone	8"Cone	8"Cone
MID Driver: size	N/A	N/A	N/A	N/A
HF Driver Size:	1"soft Dome Tweeter	1"soft Dome Tweeter	1"soft Dome Tweeter	1"soft Dome Tweeter
Crossover Frequency:	2.2kHz	2.2kHz	2.0kHz	2.0kHz
Enclosure Material:	Plastic(ABS)	Plastic(ABS)	Plastic(ABS)	Plastic(ABS)
Connector Type:	Screw Terminal	Screw Terminal	Screw Terminal	Screw Terminal
Dimensions: (W x D)	245x216x370mm	245x216x370mm	270x234x405mm	270x234x405mm
	9.1"x6.3"x5.8"	9.1"x6.3"x5.8"	7.3"x7.3"x11"	7.3"x7.3"x11"
Net Weight:	3.7kg/8.14lbs	5kg/11lbs	4.3kg/9.46lbs	5.7kg/12.54lbs

Active two-way high performance speaker systems

The Concourse Q6A and Q8A are Active two-way high performance speaker systems designed for sound reinforcement, audio-visual and music delivery applications. They combine quality transducers with high efficiency dedicated power amplifiers to deliver the highest possible performance in lightweight and durable ABS enclosures. Each model comes complete with mounting brackets and hardware, facilitating easy installation.

Concourse Q6A

The Concourse Q6A is an active, two-way speaker system consisting of a 6.5" low-frequency driver and a 1" dome tweeter combined with a 50 watt, high-efficiency power amplifier. Be aware of the position of the voltage selection switch before connecting the power cord and be sure that the correct voltage is selected before powering up the unit. Each unit is supplied with a wall mounting bracket. There are two versions available:

Concourse Q6AW White color

Concourse Q6AG Gray color

Concourse Q8A

The Concourse Q8A is an active two-way speaker system consisting of an 8" low frequency driver and a 1" dome tweeter combined with a 50 watt high-efficiency power amplifier. Each unit is supplied with a wall mounting bracket. There are two versions available:

Concourse Q8AW White color

Concourse Q8AG Gray color

QSUB

The QUAD Industrial Concourse QSub is a front loaded sub bass enclosure with a single 10" driver featuring dual 8 ohm coils. The Concourse QSub is intended to provide sub bass reinforcement in AV presentation and/or back ground music applications using satellite speakers. The Concourse QSub is available in two color options (Black and White), each with matching grill cloth to hide the transducers and ensure a uniform enclosure color.



Q6A/Q8A



Q SUB/Q SUBA

	Q6A	Q8A	Q SUB	Q SUBA
Power Handling:				
Watts RMS	50W	50W	2x125W/2x250W/2x500W	Amp Power: 300W
AC Power	Switchable 110-120	Switchable 110-120	N/A	110-120 Two versions
Frequency Response(-10dB):	220-240	220-240	35Hz-420Hz	35Hz-250Hz
Frequency Response(+/-3dB):	50Hz-20kHz	50Hz-20kHz	42Hz-350Hz	38Hz-225Hz
Sensitivity (@1W/1M):	70Hz-17kHz	80Hz-16kHz	82dB	Max Power Output
Max SPL:	85dB	86dB	106dB	105dB Measured@1m(250mv)
Coverage (H x V):	102dB	103dB	N/A	N/A
Directivity (DI) (H x V):	150° x 170°	130° x 180°	N/A	N/A
Impedance:	6.3	6.59	N/A	N/A
Regulatory approvals(9UL, CE, etc):	N/A	N/A	Left 8ohms/Right 8 ohms	N/A
Transducers:	CE	CE	CE	CE
LF Driver Size:	6.5"Cone	8"Cone	10"Long Throw	10"Long Throw
MID Driver: size	N/A	N/A	N/A	N/A
HF Driver Size:	1"soft Dome Tweeter	1"soft Dome Tweeter	N/A	N/A
Crossover Frequency:	2.2kHz	2.0kHz	150Hz	80Hz,100Hz,150Hz,200Hz
Enclosure Material:	Plastic(ABS)	Plastic(ABS)	Wood(MDF)	Wood(MDF)
Connector Type:	Screw Terminal	Screw Terminal	2 x Terminal Strip	Parallel & Line Input
Dimensions: (W x D)	245x216x370mm	245x234x405mm	585x372x316mm	585x372x316mm
	9.6"x8.5"x14.6"	10.6"x9.2"x15.8"	23"x14.6"x12.4"	23"x14.6"x12.4"
Net Weight:	4.6kg/10.12lbs	5.2kg/11.4lbs	14.2kg/31.24lbs	15.7kg/34.54lbs

ENCLOSURES

FORUM SERIES

FORUM 8/FORUM 10/FORUM 12/FORUM 15/ FORUM 8M/FORUM 15M/FORUM 12SUB/FORUM 15SUB

The most demanding sound reinforcement applications in Performing Arts facilities, Worship spaces, Theaters and Meeting facilities call for the QUAD Industrial Forum Series. A range of two-way point source sound reinforcement speakers built around QUAD's unique DuAlign™ drive units with only one objective; the ultimate in natural sound reinforcement.

The key to the unprecedented accuracy and natural response of the Forum series is the QUAD DuAlign™ drive unit. By placing the compression driver on the rear of the woofer's chassis, the high and low frequency acoustic center-points are perfectly aligned, resulting in smooth response that is just not available from discrete horn/woofer systems. Phase response remains flat, ensuring that the harmonic content of the original source is reproduced faithfully.

Because the job isn't done until the speaker is installed, each Forum model (except floor monitors) is supplied with a unique steel mounting bracket and suspension hardware kit. This bracket allows for direct wall mounting or three-point suspension, requiring only fasteners to be supplied. Forum cabinets are solidly constructed of high-density MDF and are finished in either White or Black. Heavy gauge foam-backed steel grilles are factory fitted and color matched to the cabinet.

Feature

- High performance point source loudspeaker systems
- Full range models employ QUAD DuAlign™ drive units
- Compact reinforced MDF trapezoidal enclosures available in Black or White
- Unique suspension system with supplied yoke and three- point hardware
- Available in 8", 10", 12" or 15" DuAlign™ driver sizes
- Two floor monitor models in 8" and 15" sizes
- Two folded horn sub-bass systems in 12" and 15" driver sizes



FORUM 8

The Forum 8 is a compact two-way speaker system consisting of an 8" DuAlign™ woofer with integral 2" compression driver. The speaker comes with a yoke mounting bracket and a three-point hang accessory. There are two versions available: Forum 8 Black, 8Ohms, 100 Watts ; Forum 8W White, 8Ohms, 100 Watts

FORUM 10

The Forum 10 is a compact two-way speaker system consisting of a 10" DuAlign™ woofer with integral 2" compression driver. The speaker comes with a yoke mounting bracket and a three-point hang accessory. There are two versions available: Forum 10 Black, 8Ohms, 150 Watts; Forum 10W White, 8Ohms, 150 Watts

FORUM 12

The Forum 12 is a compact two-way speaker system consisting of a 12" DuAlign™ woofer with integral 2" compression driver. The speaker comes with a yoke mounting bracket and a three-point hang accessory. There are two versions available: Forum 12 Black, 8Ohms, 200 Watts; Forum 12W White, 8Ohms, 200 Watts

FORUM 15

The Forum 15 is a compact two-way speaker system consisting of a 15" DuAlign™ woofer with integral 2" compression driver. The speaker comes with a yoke mounting bracket and a three-point hang accessory. There are two versions available: Forum 15 Black, 8Ohms, 300 Watts; Forum 15W White, 8Ohms, 300 Watts

Applications

Corporate Meeting Rooms
Classrooms
Training Rooms
Restaurants
Retail Outlets
Health Clubs
Hotels



FORUM 8/FORUM 10/FORUM 12/FORUM 15



	Forum 8	Forum 10	Forum 12	Forum 15
Power Handling:				
Continuous	100W	150W	200W	300W
Program	200W	300W	400W	600W
Peak	400W	600W	800W	1200W
Frequency Response(-10dB):	60Hz-20kHz	55Hz-20kHz	60Hz-20kHz	60Hz-20kHz
Frequency Response(+/-3dB):	90Hz-20kHz	90Hz-20kHz	90Hz-20kHz	70Hz-20kHz
Sensitivity (@1W/1M):	90dB	92dB	94dB	95dB
Max SPL:	116dB	120dB	123dB	126dB
Coverage (H x V):	70°Conical	55°Conical	60°Conical	65°Conical
Directivity (DI) (H x V):	6.69	7.15	7.21	7.1
Impedance:	8 Ohms nominal	8 Ohms nominal	8 Ohms nominal	8 Ohms nominal
Regulatory approvals(9UL, CE, etc):	CE	CE	CE	CE
Transducers:				
LF Driver Size:	8"Coaxial	10"Coaxial	12"Coaxial	15"Coaxial
HF Driver Size:	2"Compression Driver	2"Compression Driver	2"Compression Driver	2"Compression Driver
Crossover Frequency:	2.3kHz	2.2kHz	2.0kHz	2.1kHz
Enclosure Material:	MDF	MDF	MDF	MDF
Connector Type:	2xSpeakon™ Terminal Strip	2xSpeakon™ Terminal Strip	2xSpeakon™ Terminal Strip	2xSpeakon™ Terminal Strip
Dimensions: (H x W x D)	370x285x280mm	430x322x320mm	508x375x350mm	558x449x430mm
	14.6"x11.2"x11"	17"x12.7"x12.6"	20"x14.8"x13.8"	22"x17.7"x17"
Net Weight:	11.2kg/24.6lbs	15kg/33lbs	17.6kg/38.7lbs	23.5kg/52lbs

FORUM 8M

The Forum 8M is a compact two-way floor monitor system consisting of an 8" DuAlign™ woofer with integral 2" compression driver. Its low profile and clean functional design allow it to complement any interior space. There are two versions available: Forum 8M Black, 8Ohms, 100 Watts; Forum 8MW White, 8Ohms, 100 Watts

Forum 15M

The Forum 15M is a compact two-way floor monitor system consisting of a 15" DuAlign™ woofer with integral 2" compression driver. Its low profile and clean functional design allow it to complement any interior space. There are two versions available: Forum 15M Black, 8Ohms, 300 Watts; Forum 15MW White, 8Ohms, 300 Watts

FORUM 12SUB

The Forum 12SUB is a folded horn low-profile sub-bass speaker comprised of a single 12" long throw driver. Its compact dimensions make it ideal for concealed installation or where space is limited. The Forum 12SUB is available in two versions: Forum 12SUB-4 Black, 4Ohms, 300 Watts; Forum 12SUB-4W White, 4Ohms, 300 Watts

Forum 15SUB

The Forum 15SUB is a folded horn low-profile sub-bass speaker comprised of a single 15" long throw driver. Its compact dimensions make it ideal for concealed installation or where space is limited. The Forum 15SUB is available in two versions: Forum 15SUB-4 Black, 4Ohms, 450Watts; Forum 15SUB-4W White, 4Ohms, 450Watts



FORUM 8M/FORUM 15M



FORUM 12SUB/FORUM 15SUB

	Forum 8M	Forum 15M	Forum 12SUB	Forum 15SUB
Power Handling:				
Continuous	100W	450W	300W	450W
Program	200W	900W	600W	900W
Peak	400W	1800W	1200W	1800W
Frequency Response(-10dB):	70Hz-20kHz	70Hz-20kHz	40Hz-300Hz	35Hz-350Hz
Frequency Response(+/-3dB):	95Hz-20kHz	95Hz-20kHz	45Hz-200Hz	40Hz-200Hz
Sensitivity (@1W/1M):	92dB	96dB	98dB	99dB
Max SPL:	118dB	128dB	128dB	131dB
Coverage (H x V):	70°Conical	65°Conical	N/A	N/A
Directivity (DI) (H x V):	6.69	7.1	N/A	N/A
Impedance:	8 Ohms nominal	8 Ohms nominal	4 Ohms nominal	4 Ohms nominal
Regulatory approvals(9UL, CE, etc):	CE	CE	CE	CE
Transducers:				
LF Driver Size:	8"Coaxial	15"Coaxial	12"Long Throw	15"Long Throw
HF Driver Size:	2"Compression Driver	2"Compression Driver	N/A	N/A
Crossover Frequency:	2.3kHz	2.1kHz	250Hz LPF	250Hz LPF
Enclosure Material:	MDF	MDF	MDF	MDF
Connector Type:	2xSpeakon™ Terminal Strip	2xSpeakon™ Terminal Strip	2xSpeakon™ Terminal Strip	2xSpeakon™ Terminal Strip
Dimensions: (H x W x D)	370x285x287mm 14.6"x11.2"x11.3"	558x449x387mm 22"x17.7"x15.2"	240x750x595mm 9.4"x29.5"x23.4"	266x850x670mm 10.5"x33.5"x26.4"
Net Weight:	9.8kg/21.6lbs	21kg/46.2lbs	38.5kg/85lbs	47.1kg/104lbs

CONCOURSE D SERIES

D4/D4-16/D4T/D5/D5-16/D5T

The Concourse D4(T) and D5(T) are premium bi-pole speaker systems designed for distributed music, speech and audio-visual applications. Their unique design incorporates two woofers and two soft-dome tweeters arrayed inside each enclosure to deliver wide dispersion for even coverage and minimal sound level variation. Designed for wall mounting, the D series are available in low impedance and constant-voltage versions.

Feature

- High performance two-way surface mount speaker systems
- Two full-range models in D series; D4 and D5
- Available in low impedance or 70/100V versions
- Optional 3.75W/7.5W/15W/30W transformer



Concourse D4/D4-16/D4T

The Concourse D4 is a two-way bi-pole speaker system consisting of two 4" LF drivers and two 1" soft dome tweeters in a ported ABS enclosure. There are nine versions available:

- Concourse D4W-White,4ohms,40Watts
- Concourse D4B-black,4ohms,40Watts
- Concourse D4G-Grey,4ohms,40Watts
- Concourse D4-16W-White,16ohms,40Watts
- Concourse D4-16B-Black,16ohms,40Watts
- Concourse D4-16G-Grey,16ohms,40Watts
- Concourse D4TW-White,30Watt, 70/100V transformer included
- Concourse D4TB-Black,30Watt, 70/100V transformer included

Concourse D5/D5-16/D5T

The Concourse D5 is a two-way bi-pole speaker system consisting of two 5" LF drivers and two 1" soft dome tweeters in a ported ABS enclosure. There are six versions available:

- Concourse D5W-White,4ohms,60Watts
- Concourse D5B-Black,4ohms,60Watts
- Concourse D5-16W-White,16ohms,60Watts
- Concourse D5-16B-Black,16ohms,60Watts
- Concourse D5TW-White,30Watt, 70/100V transformer included
- Concourse D5TB-Black,30Watt, 70/100V transformer included

Applications

- Corporate Meeting Rooms
- Classrooms
- Training Rooms
- Restaurants
- Retail Outlets
- Health Clubs
- Hotels





D4/D4-16/D4T/D5/D5-16/D5T

	D4	D4-16	D4T
Power Handling:			
Continuous	40W	40W	70V:3.7W/7.5W/15W/30W
Program	80W	80W	100V:7.5W/15W/30W
Peak	160W	160W	N/A
Frequency Response(-10dB):	85Hz-20kHz	85Hz-20kHz	85Hz-20kHz
Frequency Response(+/-3dB):	100Hz-20kHz	95Hz-12kHz	95Hz-12kHz
Sensitivity (@1W/1M):	84dB	84dB	82dB
Max SPL:	105dB	106dB	97dB
Coverage (H x V):	160° x 150°	160° x 150°	160° x 150°
Directivity (DI) (H x V):	6.65	6.65	6.65
Impedance:	4 ohms	16 ohms	N/A
Regulatory approvals(9UL, CE, etc):	CE	CE	CE
Transducers:			
LF Driver Size:	2x4"Cone	2x4"Cone	2x4"Cone
HF Driver Size:	2x1"Soft Dome	2x1"Soft Dome	2x1"Soft Dome
Crossover Frequency:	3.5kHz	3.5kHz	3.5kHz
Enclosure Material:	Plastic(ABS) Wood Back Panel	Plastic(ABS) Wood Back Panel	Plastic(ABS) Wood Back Panel
Connector Type:	Barrier Strip	Barrier Strip	Barrier Strip
Dimensions: (H x W x D)	11"x11.3"x5.2"	11"x11.3"x5.2"	11"x11.3"x5.2"
	280x288x132mm	280x288x132mm	280x288x132mm
Net Weight:	2.7kg/6lbs	2.7kg/6lbs	3.4kg/7.5lbs
	D5	D5-16	D5T
Power Handling:			
Continuous	60W	60W	70V:3.7W/7.5W/15W/30W
Program	120W	120W	100V:7.5W/15W/30W
Peak	240W	240W	N/A
Frequency Response(-10dB):	60Hz-20kHz	60Hz-20kHz	70Hz-20kHz
Frequency Response(+/-3dB):	95Hz-20kHz	90Hz-20kHz	95Hz-12kHz
Sensitivity (@1W/1M):	84dB	84dB	84dB
Max SPL:	107dB	108dB	99dB
Coverage (H x V):	80° x 60°	80° x 60°	80° x 60°
Directivity (DI) (H x V):	7.18	7.18	7.18
Impedance:	4 ohms	16 ohms	N/A
Regulatory approvals(9UL, CE, etc):	CE	CE	CE
Transducers:			
LF Driver Size:	2x5"Cone	2x5"Cone	2x5"Cone
HF Driver Size:	2x1"Soft Dome	2x1"Soft Dome	2x1"Soft Dome
Crossover Frequency:	3kHz	3kHz	3kHz
Enclosure Material:	Plastic(ABS) Wood Back Panel	Plastic(ABS) Wood Back Panel	Plastic(ABS) Wood Back Panel
Connector Type:	Barrier Strip	Barrier Strip	Barrier Strip
Dimensions: (H x W x D)	13.8"x14.3"x6"	13.8"x14.3"x6"	13.8"x14.3"x6"
	350x363x160mm	350x363x160mm	350x363x160mm
Net Weight:	4kg/8.8lbs	4kg/8.8lbs	4.7kg/10.3lbs

QAA POWER AMPLIFIERS

QAA 702/QAA 1002/QAA 1502

The QAA 702, QAA 1002 and QAA 1502 are professional stereo power amplifiers designed for a variety of fixed installation, sound reinforcement applications.

Each model has been designed to drive speaker loads as low as 2 ohms without damage or performance degradation. The amplifiers can be operated in stereo mode or bridged mono for driving subwoofers or other high-power loads. The amplifier can accept input signals from either balanced or unbalanced connections. Unbalanced connections may be used where the signal path from the source to the amplifier is 6' (2 meters) or less. An internal variable speed cooling fan ensures during operations. QAA series amplifiers can be installed inside standard 19" equipment racks or placed on a shelf or tabletop.



QAA 702

The QAA 702 is a professional grade stereo power amplifier that delivers up to 640W RMS per channel into a 2 ohm load when driven in stereo or up to 1200W RMS when bridged mono. It offers balanced inputs on detachable termination blocks with rear-mounted gain trim controls.

QAA 1002

The QAA 1002 is a professional grade stereo power amplifier that delivers up to 900W RMS per channel into a 2 ohm load when driven in stereo or up to 1800W RMS when bridged mono. It offers balanced inputs on detachable termination blocks with rear-mounted gain trim controls.

QAA 1502

The QAA 1502 is a professional grade stereo power amplifier that delivers up to 1500W RMS per channel into a 2 ohm load when driven in stereo or up to 3000W RMS when bridged mono. It offers balanced inputs on detachable termination blocks with rear-mounted gain trim controls.

Applications

Corporate Meeting Rooms
Classrooms
Training Rooms
Restaurants
Retail Outlets
Health Clubs
Hotels





QAA 702

QAA 1002

QAA 1502

Rated Output Power

Stereo Mode

8 ohms (1%THD):	260Wx2
4 ohms (1%THD):	400Wx2
2 ohms (1%THD):	640Wx2

Bridge Mode

8 ohms (1%THD):	800W
4 ohms (1%THD):	1200W

Input Sensitivity&Impedance

Rated Output Power:	0.755V
Unbalanced Phoenix Connection:	10k Ohms
balanced Phoenix Connection:	20k Ohms
Voltage gain:	35dB

Slew Rate

Stereo Mode:	>30µs
Unilateral Bridge Mode:	>50µs
Channel Separation:	76dB
Signal Noise(20Hz-20kHz)	>100dB
Distortion:	0.05%

Frequency Response

(+/-1dB)@Rated Output:	20Hz-20kHz
(+/-3dB)@Rated Output:	5Hz-50kHz
Damping Factors(8ohms,1kHz):	>300

Connections

Input:	Phoenix Connectors
Output:	Barrier Screw Terminal

Controls

Front:	AC Power Switch
Back:	Stereo/bridge switch/CHA

Display

	CHB Gain Control/Breaker
	Power/Protect/Bridge/
	Ch A Peak/Ch B Peak LEDs

Cooling:

Continuous variable speed fan

Dimensions(HxWxD):

133x483x355mm

5.25"x19"x14"

Net Weight:

23kg/51lbs

330Wx2

600Wx2

900Wx2

1200W

1800W

0.755V

10k Ohms

20k Ohms

35dB

>30µs

>50µs

76dB

>100dB

0.05%

20Hz-20kHz

5Hz-50kHz

>300

Phoenix Connectors

Barrier Screw Terminal

AC Power Switch

Stereo/bridge switch/CHA

CHB Gain Control/Breaker

Power/Protect/Bridge/

Ch A Peak/Ch B Peak LEDs

Continuous variable speed fan

133x483x355mm

5.25"x19"x14"

25kg/55lbs

800Wx2

1400Wx2

1500Wx2

2800W

3000W

0.755V

10k Ohms

20k Ohms

38dB

>40µs

>50µs

76dB

>100dB

0.05%

20Hz-20kHz

5Hz-50kHz

>400

Phoenix Connectors

Barrier Screw Terminal

AC Power Switch

Stereo/bridge switch/CHA

CHB Gain Control/Breaker

Power/Protect/Bridge/

Ch A Peak/Ch B Peak LEDs

Continuous variable speed fan

133x483x355mm

5.25"x19"x14"

28kg/62lbs

QPM1 PRO ACTIVE NEAR FIELD

The QPM1 is a high quality reference monitor intended to help the recording engineer produce an accurate and reliable recording. Designed with this specific purpose, the QPM1 has performance and user features to make the monitoring part of the process as easy, transparent and accurate as possible. The 25.4mm Titanium diaphragm on the high frequency driver projects crystal clear high frequencies with minimal distortion. Carbon Fibre is used as the cone material as it is a lightweight, ultra strong material. The low and midrange frequencies come through effortlessly and cleanly. Those dynamic passages, such as the crack of a snare drum or the report of a cannon, come through just like the real thing.

The QPM1 monitors are also ideal in Audio/ Visual applications. The rich accurate sound is a great complement to any visual performance or presentation.

Using the QPM1 in 5.1 or 7.1 Systems makes your multi-channel experience spectacular. Add a powered subwoofer and you have a first rate home theatre system. Because the speakers are so smooth in frequency response it makes it easier to position them with ease and obtain wonderful results.



Feature

- 2-way active bi-amplified reference monitor speaker
- High gloss Iridium finish
- Magnetic shielding for use near CRTs
- Front panel Power "ON" LED indicators
- Rear panel Switchable Bass Filter
- Rear panel Combination XL and 1/4" line level inputs PLUS unbalanced RCA/phono input
- Rear panel Cut/Flat, Low Frequency contour control
- Rear panel volume control with center detent for accurate level balance in stereo pairs
- Rear panel On/Off switch
- Low distortion, high power, 125mm Carbon Fibre woofer
- 25.4mm cloth high frequency compression driver



QPM1

Passive Components:

Transducer complement	2 way
Cone Bass Driver	5"/125mm
Soft Dome Tweeter	1"/25mm
Bass driver	D688
Tweeter	D695

Active Components

Bass Power Amplifier	60W
Treble Power Amplifier	40W
Active Crossover Network	1.8KHz

System Performance

Frequency response +/-6dB	45Hz-24KHz(unfiltered)
Bass filter	-6dB/Octave(rel.100Hz)
Short-term Peak SPL(@1M)	102dB
Upper frequency limit-10dB	32kHz
Input Impedance@1KHz	10k Ohms
Input Sensitivity	0.755V(0dBu)
Signal/Noise Ratio	>100dB
System Fb	55Hz
Magnetic Screening	Yes
Mains Voltage	230V or 110V available
Power Consumption	22W idle; 120W max

Physical Characteristics

Balanced signal input socket	XLR-1/4"TRS jack combo
Unbalanced signal input socket	RCA phono(cinch)
Mains input connector	3 pin IEC fused
Enclosure type	Ported
Enclosure construction material	15&25mm MDF
Product dimension (HxWxD):	326x190x284mm
Net weight	8.2kg



QUAD
INDUSTRIAL



QUAD
I N D U S T R I A L

QUAD INDUSTRIAL

UK: IAG House, Sovereign Court, Ermine Business Park, Huntingdon, Cambs, PE29 6XU, England

CHINA: Sanecore Industrial Park, Jiuwei, Xixiang, Shenzhen, China 518102

www.quadindustrial.com

The information in this brochure is subject to change without notice. All rights reserved © 2009 QUAD Industrial. QUAD Industrial is a member of the IAG Group.